



PATSAFE COURSE 2.3: VALIDATING MEASUREMENT INSTRUMENTS ON PATIENT SAFETY CULTURE FOR HOSPITAL SETTINGS IN ESTONIA

Learn everything about measurement properties and how to validate safety culture instruments for your workplace

- **Five** interactive workshops between **March and December 2021**
- **First workshop from 8 to 12 March 2021** (see next page)
- Pre-requisite: it is recommended to have completed or follow course 2.1 about Safety Culture (Online Moodle Course). **Workshop 1 is a prerequisite to follow the other workshops in this course.**
- Study hours: 10 study hours (0.5 ECTS) for each workshop, 50 study (2.5 ECTS) hours for all workshops

**ADVANCED VERSION
INCLUDES 5 WORKSHOPS
(48H – 2.5 ECTS)**

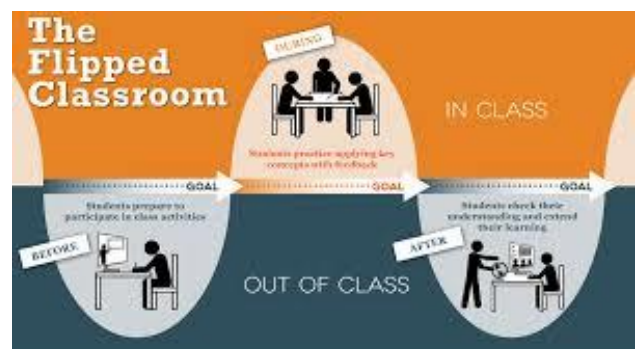
**BASIC VERSION INCLUDES
WORKSHOP 1
(10H – 0.5 ECTS)**

After completion of the five workshops you:

- Possess the basic knowledge about all measurement properties
- Possess in-depth knowledge about the measurement property validity
- Have an overview of the most well-known safety culture instruments in healthcare
- Have the skills to validate an (safety culture) instrument for your workplace

Flipped classroom approach

- Content delivery is done by preparatory activities such as reading articles or watching knowledge clips
- Live workshop sessions (online or face-to-face) with teachers, experts and other participants to explore topics in greater depth, do exercises, ask questions and have discussions





WORKSHOP 1: AN INTRODUCTION TO MEASUREMENT PROPERTIES,
DIFFERENT TYPES OF VALIDITY AND PATIENT SAFETY CULTURE MEASUREMENT INSTRUMENTS

- Date: 8 to 12 March 2021
- **Workshop 1 is a prerequisite to follow workshop 2-5**
- Study hours: 10 (0.5 ECTS)

**BASIC VERSION INCLUDES
WORKSHOP 1
(10H – 0.5 ECTS)**

After completion of this workshop you will:

- Be introduced to the most important concepts, definitions and descriptions related to the quality of measurement instruments
- Understand why validity is important
- Be able to describe and understand the different types of validity
- Have an overview of important safety culture instruments
- Know the important considerations for choosing a safety culture instrument

Workshop overview:

- Preparatory activities (reading articles, watching knowledge clips)
- 3 live (online) workshop sessions (**mandatory in order to get a certificate**)
 - 8 March (13.00 – 15.00 hour, Estonian time) – measurement properties, the importance of validity
 - 10 March (13.00 – 15.00 hour, Estonian time) – different kinds of validity and safety culture instruments
 - 12 March (12.00 – 14.00 hour, Estonian time) – considerations for choosing a safety culture instrument to validate

For registration and a list of other courses, please contact Kaja Põlluste (kaja.polluste@ut.ee)

For more information about the course, please contact Anne van Tuijl (anne.vantuijl@radboudumc)