

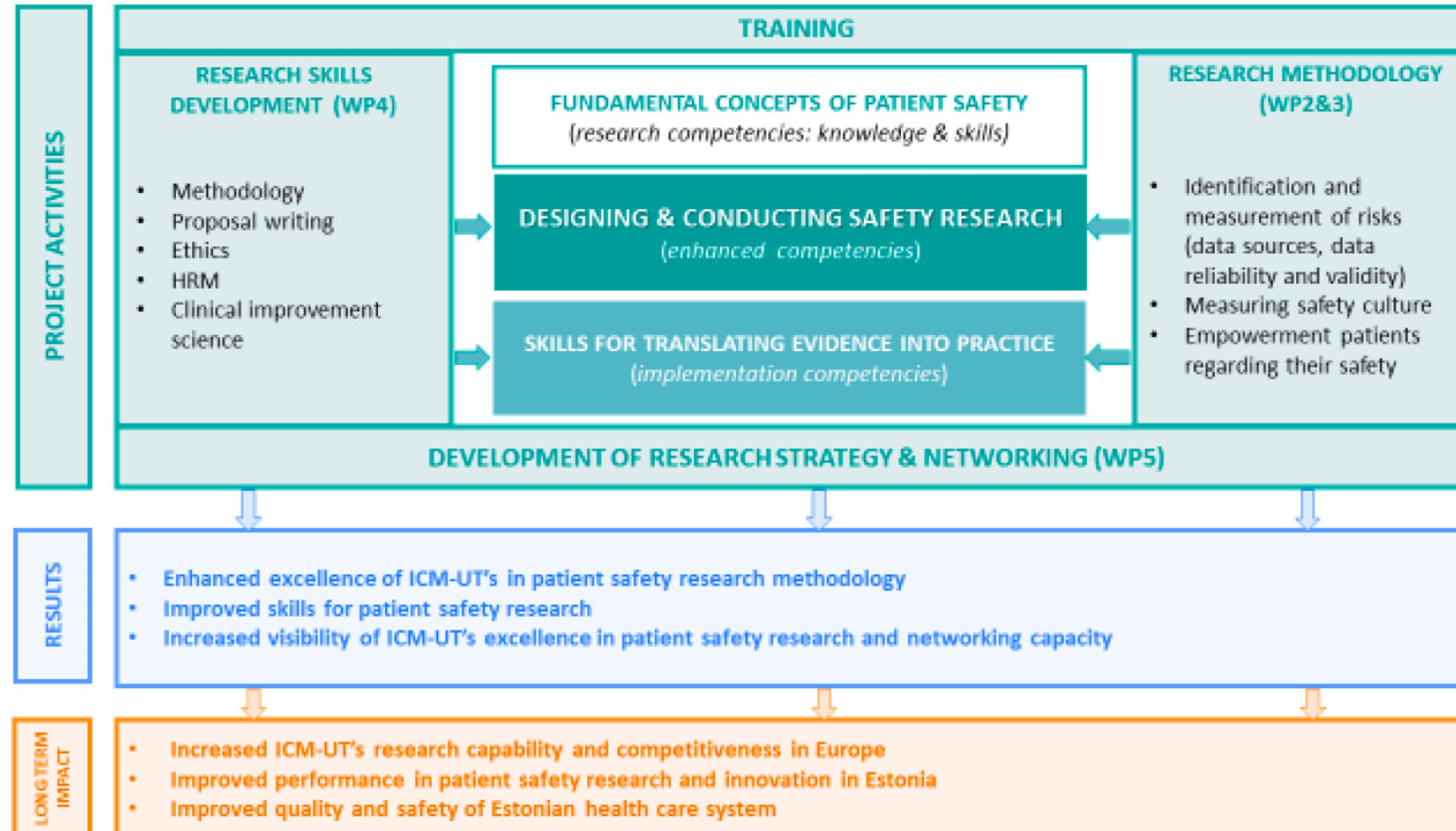
Developing the University of Tartu to a well-networked **PATient SAFETY** research center in Estonia (**PATSAFE**)



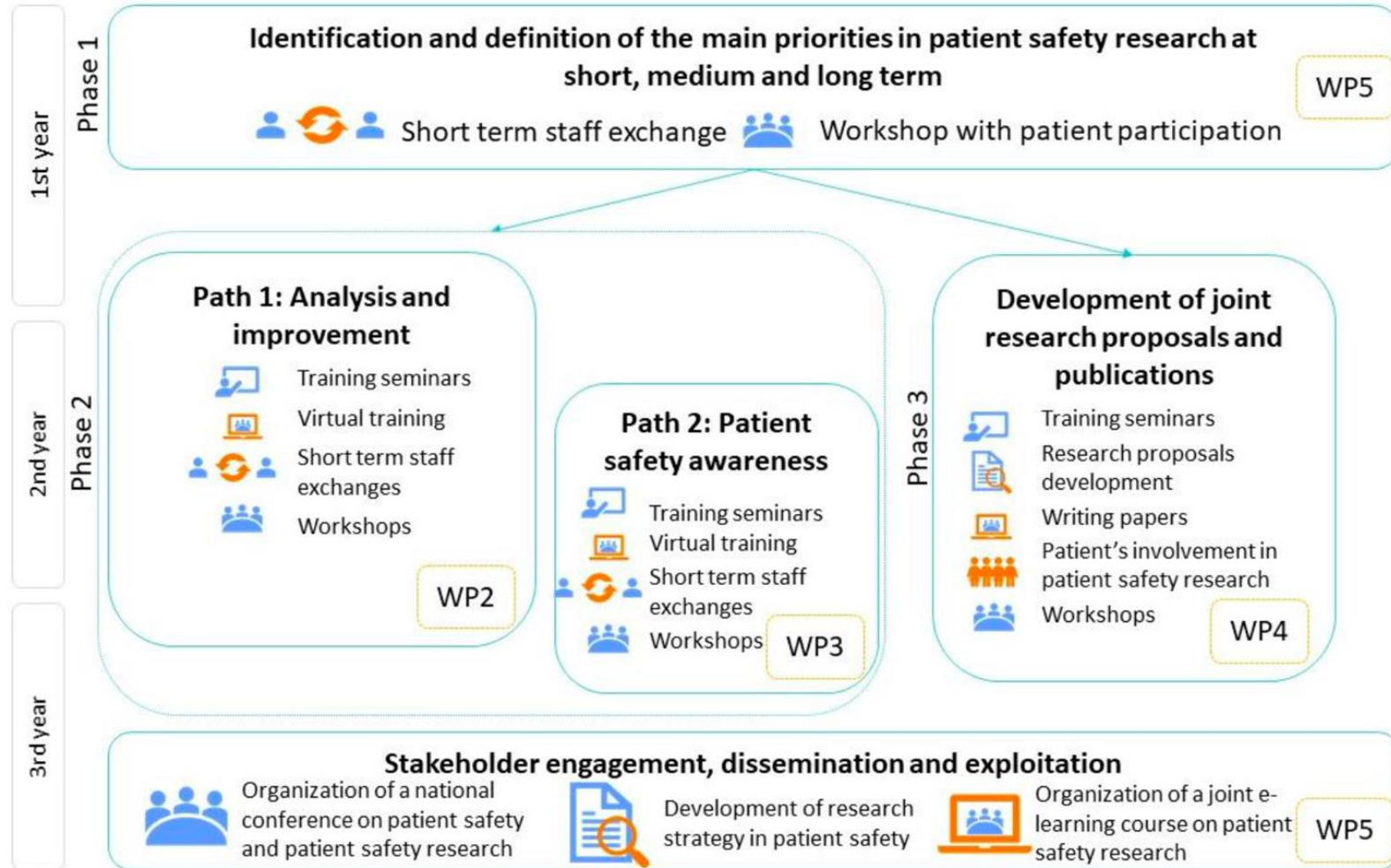
PATSAFE PROJECT

- The **PATSAFE** project will enhance Institute of Clinical Medicine of the University of Tartu *research potential and capacities in patient safety* in order to improve and strengthen *knowledge and skills in methods, techniques* and *experience* for *patient safety research*.
- PATSAFE Project aims to
 - **Strengthen and raise the research profile of the ICM-UT academic staff and early stage researchers**, by implementing the hands-on training on the methods, techniques and experience in patient safety research;
 - **Encourage the active participation of early stage researchers in patient safety research by increase their soft skills**, to ensure the continuity and sustainability of patient safety research in the Institute of Clinical Medicine of the University of Tartu.

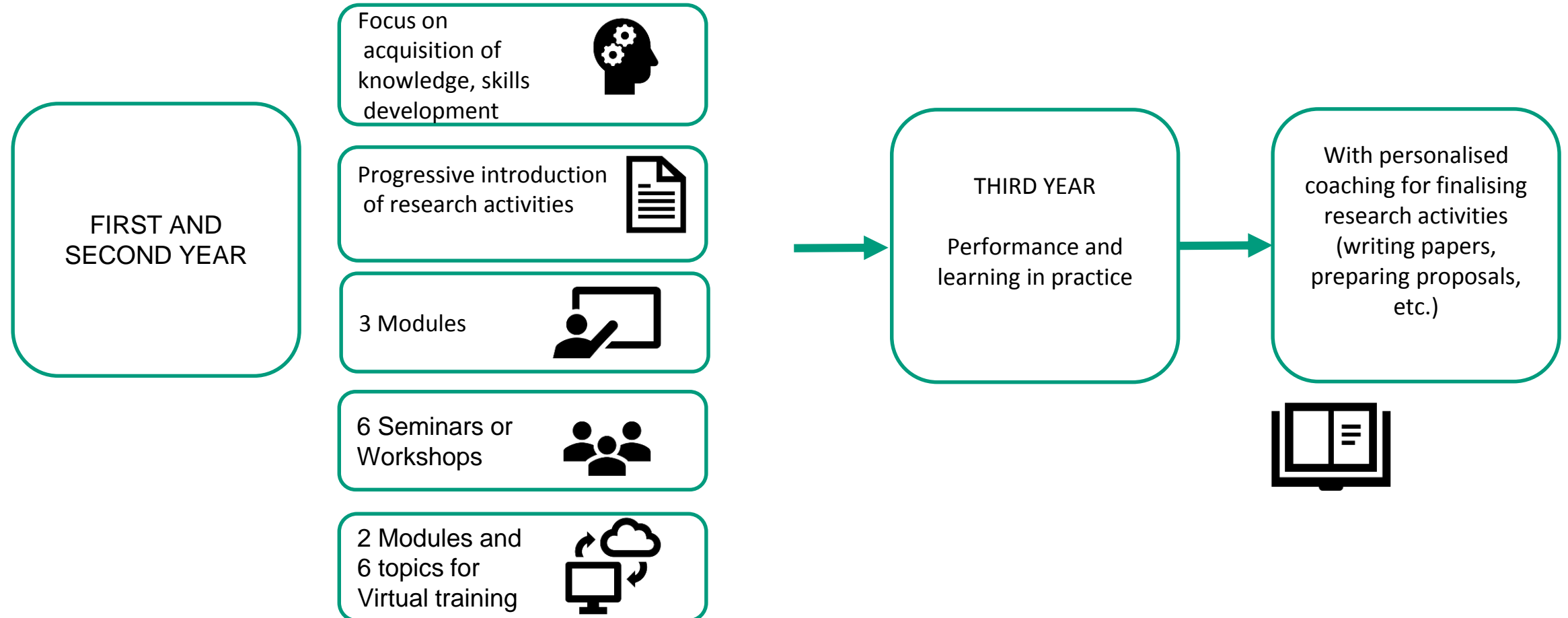
Concept of PATSAFE



Overall methodology of PATSAFE



Curriculum structure and methodology



Methods for the training program

- **Training seminars:** theoretical topics will be addressed by face-to-face interactive seminars, including case studies and discussions.
- **Virtual training:** all the material prepared will be organized by modules and pathways using a “Moodle” virtual platform. This system will be also used to promote exchange and facilitate work between face-to-face activities.
- **Short term staff exchanges:** In order to let the Tartu staff to visualize how to implement the research on different patient safety topics in real scenarios and have the opportunity to interact with other team member of the twinning organizations, short term staff exchange will be organized.
- **Workshops:** workshops will be designed to cover activities that need a higher number of participants or to identify and present the activities are being implemented in Tartu by the different departments and looking for synergies

THEME 1: Basis on patient safety

Topic 1: BASIC DEFINITIONS AND THE BURDEN OF UNSAFE CARE	FEBRUARY –AUGUST 2020
Fundamental concepts of the science of patient safety Human errors and system errors	
<ul style="list-style-type: none">• Taxonomies in patient safety• Classification of errors and adverse events	
Impact of adverse events	
<ul style="list-style-type: none">• Epidemiology of adverse events• Nature and distribution of adverse events	
Methods used for identification of adverse events	
<ul style="list-style-type: none">• Choice of appropriate methods• Validity and reliability, sensitivity and specificity of different methods	
Topic 2 METHODS OF ANALYSIS AND IMPROVEMENT OF ADVERSE EVENTS	SEPTEMBER 2020 –JANUARY 2021
<ul style="list-style-type: none">• General concepts• Root Cause analysis• Reporting systems	
Topic 3 PROACTIVE METHODS: PROBABILISTIC RISK ASSESSMENT MODELS	FEBRUARY – AUGUST 2021
Proactive assessment	
<ul style="list-style-type: none">• Concept of risk• Priority risk assessment	
Healthcare Failure Mode and Effect Analysis	
<ul style="list-style-type: none">• Main phases and applications	
Topic 4: IMPLEMENTATION SCIENCE: TRANSLATING RESEARCH INTO SAFE CARE	SEPTEMBER – JANUARY 2021
Evidence-based safety practices	
Implementation research on patient safety	
<ul style="list-style-type: none">• Mixed methods used to assess implementation of patient safety practices• Theory-driven interventions' design	
Concept of complex interventions	
<ul style="list-style-type: none">• How to define and evaluate complex interventions• Intervention fidelity• Process and results outcomes	
Evaluating context	
<ul style="list-style-type: none">• Understanding the determinants and barriers to implementing interventions	

THEME 2: Patient safety culture and patient involvement

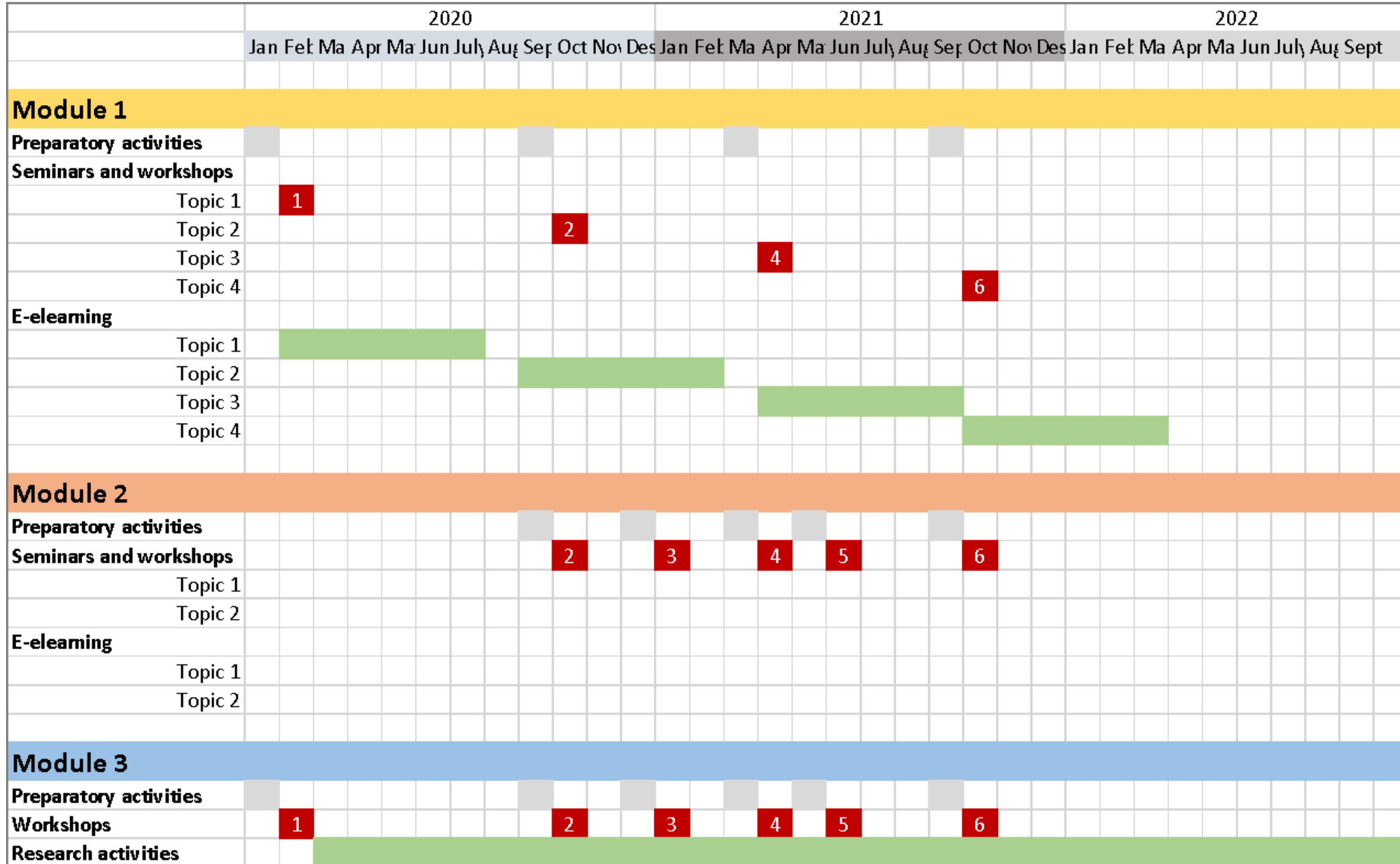
TRAINING ACTIVITY & TOPICS	PLANNING
E-learnings 5 & 6	August/september 2020
Introduction in patient involvement (e-learning 5), and patient safety culture (e-learning 6)	
Workshop 2 (2 days)	September/October 2020
Validating techniques of measurement tools for safety culture	
Workshop 3 (2 days)	January 2021
Validating techniques of measurement tools for safety culture	
Staff exchange (2.5 days; 2 ESR/PhDs)	March 2021 (proposed)
Focus on prospective measurement for risk identification in practice (<i>possibilities for also literature review</i>)	
Workshop 4 (2 days)	March/April 2021
Validating techniques of measurement tools for safety culture	
Workshop 5 (2 days)	June 2021
Validating techniques of measurement tools for safety culture	
Workshop 6 (2 days)	September 2021
Validating techniques of measurement tools for safety culture	
Staff exchange (2.5 days; 2 ESR/PhDs)	October 2021 (proposed)
Focus on prospective measurement for risk identification in practice (<i>possibilities for also literature review</i>)	
Coaching on a distance with some visits to ICT-UT	September 2021/June 2022
E.g. on (prospective) risk identification, finalizing a literature review on interventions to improve patient safety culture, ...	

THEME 3: Building soft skills for patient safety research

Training activity	Content	Planning
Face-to-face workshop I	Introduction for research skills	February 2020
Topic I Research proposal		
Face-to-face workshop II	<ul style="list-style-type: none"> •The structure of research proposal •Budgeting of the research proposal •Planning of the timetable of research proposal •Funding sources of the research proposal 	February 2020
Topic II Research ethics		
Face-to-face workshop III	<ul style="list-style-type: none"> •Ethical principles of health research •Informed consent •Researcher's responsibilities in research proposal •The process of ethics review by ethics committee 	August 2020
Topic III Intellectual property rights (IPR) and commercialization in research		
Face-to-face workshop IV	<ul style="list-style-type: none"> •Intellectual property rights •Commercialization of the findings based scientific research 	January 2021
Topic IV Human resources (HR) and change management in clinical setting		
Face-to-face workshop V	<ul style="list-style-type: none"> •Implementation theories of novel practices 	September 2021

Timeline

Pending to complete



- Project partners:
 - Avedis Donabedian Foundation, Barcelona, Spain
 - IQ healthcare, Radboud university medical center, Nijmegen, The Netherlands

For detailed information, please contact:

Kaja Põlluste

Senior researcher in internal medicine and PATSAFE Project manager,

Department of Internal Medicine

kaja.polluste@ut.ee

