

RESEARCH STRATEGY ON PATIENT SAFETY: LINKING THEORY TO PRACTICE

K. PÖLLUSTE¹, H. CALSBECK², C. ORREGO³, M. LEMBER^{1,4}

¹ Department of Internal Medicine, Institute of Clinical Medicine, University of Tartu, Tartu, Estonia
² IQ healthcare, Radboud Institute for Health Sciences, Radboud university medical center, Nijmegen, Netherlands
³ Avedis Donabedian Foundation, Barcelona, Spain
⁴ Tartu University Hospital, Tartu, Estonia

P501

INTRODUCTION

- Research is an essential cornerstone for improvement the patient safety (PS).
- In Estonia, the research in PS is currently in the start-up stage.
- There is a need for clearly formulated research strategy in PS.
- The Faculty of Medicine at the University of Tartu (FM-UT) as a single medical school in Estonia is responsible for PS research and development nationwide.
- Development of the institutional PS research strategy for the FM-UT is one of aims of the PATSAFE project initiated in 2019.

AIM

To describe the strategy development process which took place between October 2020-December 2021:

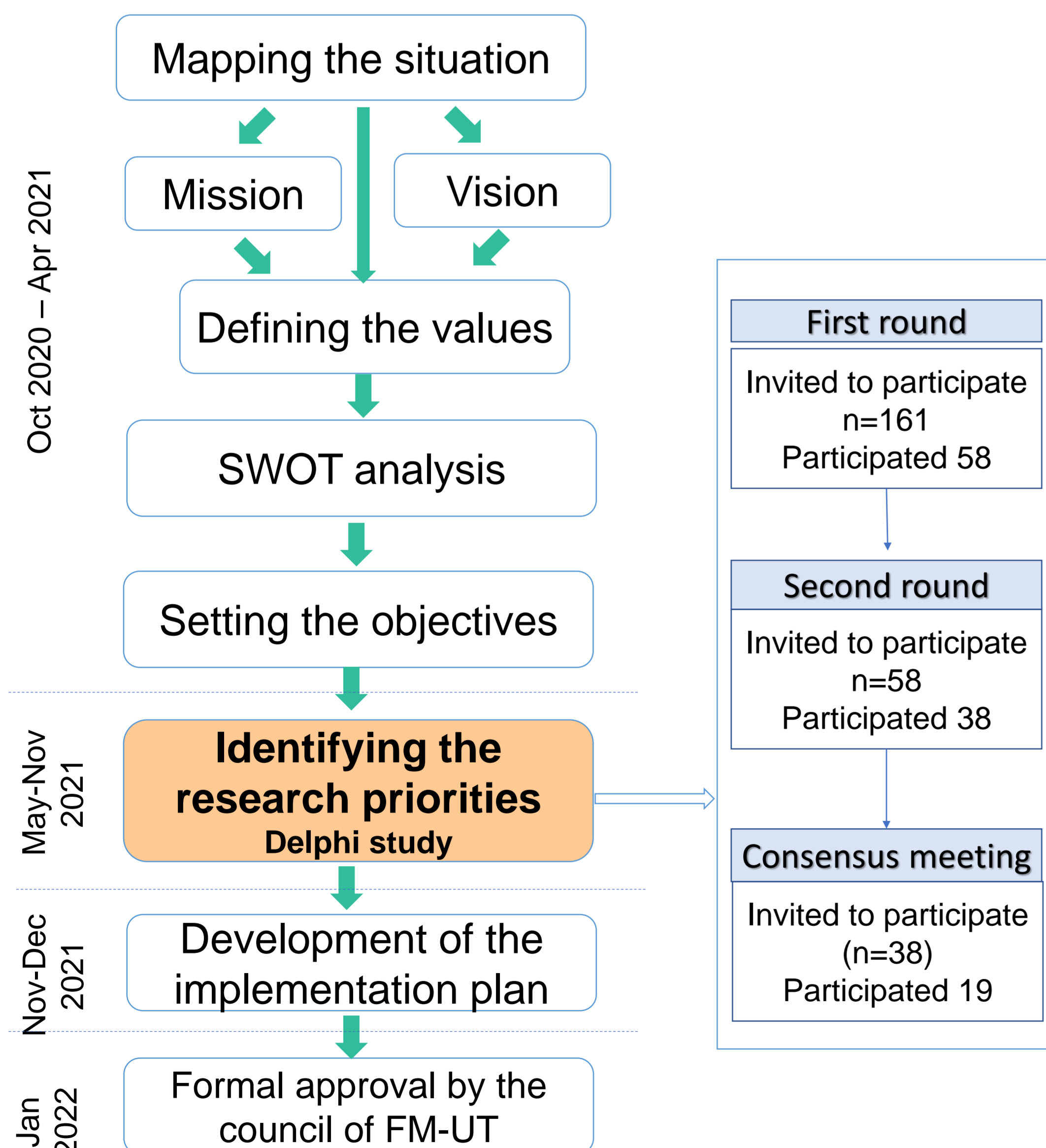
- mapping the situation,
- setting the objectives,
- defining the research priorities, and
- setting up the implementation plan for 2022-2026.

METHOD

Strategy development team

- Multidisciplinary patient safety development group of FM-UT
- PATSAFE Project team members

Strategy development process



RESULTS

MAPPING THE SITUATION

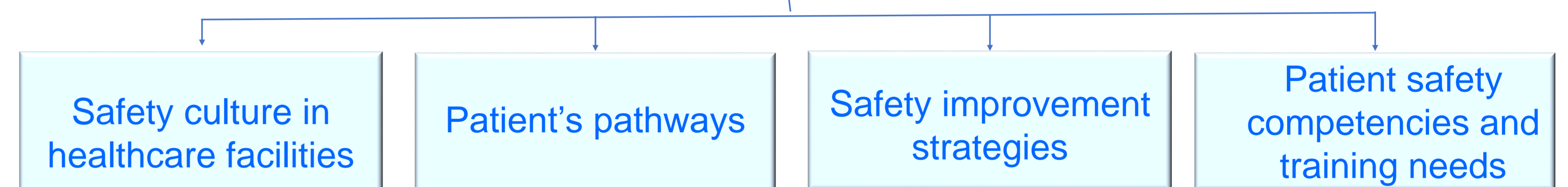
- The search in Estonian Research Information System resulted in only 69 publications related to PS research;
- The topics studied were heterogeneous and depending rather on researchers' personal interest than on the real needs of the society.

SWOT ANALYSIS

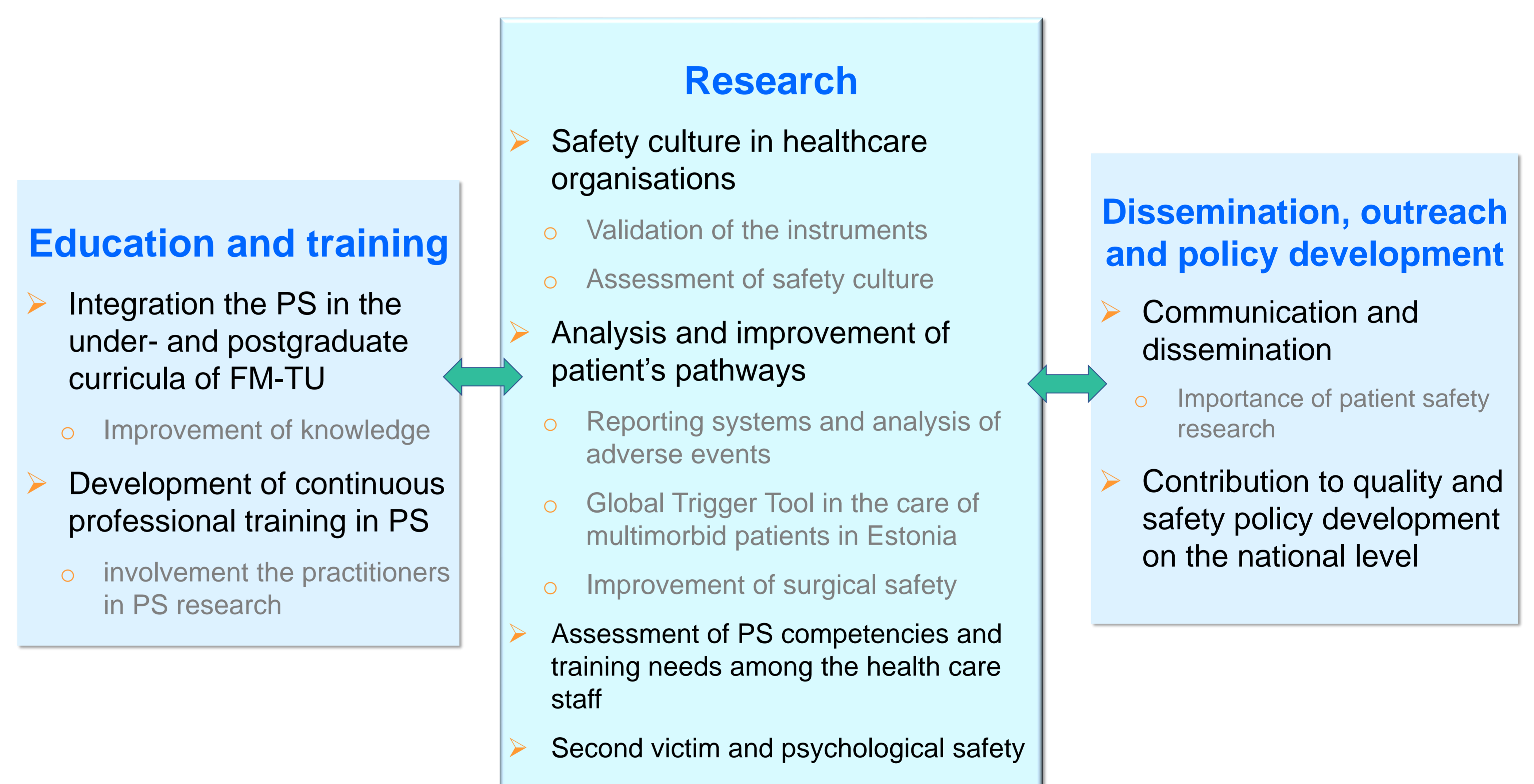
- Input for the
 - definition of the problem,
 - formulation of the objectives, and
 - Development of the implementation plan

RESEARCH PRIORITIES

Based on the experts' consensus



IMPLEMENTATION PLAN 2022-2026



CONCLUSIONS

- The completion and formal approval of the PS research strategy is an important milestone in the development of the PS and PS research in Estonia.
- Definition of consensus-based research priorities is an essential promotor of the further research in patient safety.
- In our best knowledge, this is a unique document in the International context as well, and therefore could be an example for development a PS research strategy for academic institutions worldwide.

ACKNOWLEDGEMENT

- We appreciate all PATSAFE project and strategy development team members for their contribution.
- The authors thank all the experts who participated in the Delphi study.
- This study was carried out as a part of the PATSAFE Project, which was funded by the European Union's Horizon 2020 research and innovation programme under grant agreement No 857359.

CONTACT INFORMATION

PATSAFE: Developing the University of Tartu to a well-networked PATient SAFETY research centre in Estonia:
 Twinning partnership with **Avedis Donabedian Foundation** from Spain and **IQ healthcare** from The Netherlands

For further information please contact kaja.polluste@ut.ee

REFERENCES

1. World Health Organization. Global priorities for patient safety research. better knowledge for safer care. In: A world Alliance for safer health care. WHO, 2009.
2. Freimann T, Pöllumäe K, Calsbeek H, Kangasniemi M, Lember M, Orrego C, Vall-Roque H, van Tuijl A, Starkopf J. Identifying patient safety research priorities in Estonia: results of a Delphi consensus study. *BMJ Open Quality* 2022; 11;3. doi: <http://dx.doi.org/10.1136/bmjopen-2022-001907>